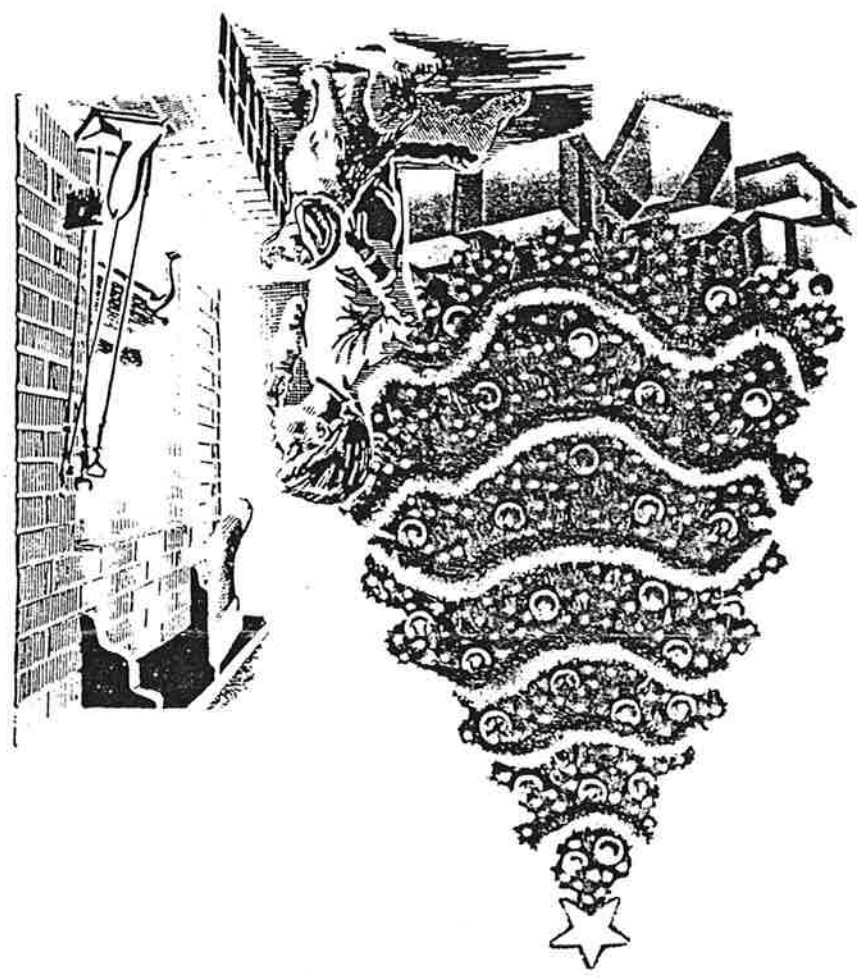


November-December
1988



Merry Christmas

'THIS SPACE AVAILABLE FOR ADVERTISING'

SOUTH AUSTRALIA GUNDOG WEEKEND

MAY — 1989

ADELAIDE

GUNDOG EXHIBITORS ARE ADVISED THAT THE FOLLOWING SPECIALITY SHOWS WILL BE CONDUCTED ON THE LONG WEEKEND AT A COMMON VENUE

SATURDAY 13th MAY

THE COCKER SPANIEL CLUB — JUDGE: **B. McGIVERN U.S.A.**
ENQUIRIES TO:- *J. BALFOUR 262 2439*

THE GOLDEN RETRIEVER CLUB — JUDGE: **MRS. BALAAM U.K.**
ENQUIRIES TO:- *J. MOORE 388 8383 (AM START)*

THE GERMAN SHORTHAIRED POINTER CLUB — JUDGE: **SHIRLEY LIMOGES CAN.**
ENQUIRIES TO:- *A. PELGRAVE 276 2637 (AM START)*

THE IRISH SETTER CLUB — JUDGE: **NORMA HAMILTON N.S.W.**
ENQUIRIES TO:- *P. SCOTT 265 1770 (9.00 AM START)*

THE LABRADOR CLUB — JUDGE: **JOE WHITTALL S.A.**
ENQUIRIES TO:- *M. STRAWBRIDGE 339 5009 (PM START)*

THE SETTER CLUB — JUDGE: **MR. E. TREUTEL U.S.A.**
ENQUIRIES TO:- *N. POLAND 323 8670 (AM START — IRISH AFTER LUNCH)*

THE WEIMARANER CLUB — JUDGE: **SHIRLEY LIMOGES CAN..**
ENQUIRIES TO:- *J. TOWNLEY 381 8774 (PM START)*

SUNDAY 14th MAY

THE GUNDOG CLUB — JUDGES: **SHIRLEY LIMOGES CAN.
B. McGIVERN U.S.A.**
ENQUIRIES TO:- *R. KEMP (085) 20 2172 (AM START)*

MONDAY 15th MAY

THE GUNDOG CLUB — ALL BREEDS OBEDIENCE TRIAL

ADVERTISING IN COMBINED CATALOGUE PREPAID AT \$25.00 PER PAGE INCLUDING PHOTO

TO MY DOG

With your soulful eyes, and your pert little face,
In my heart you've a very special place;
Your devotion and trust mean so much to me,
Your love and unspoken sympathy.

Last night you looked so dejected, forlorn,
And I knew there had been no scolding or scorn,
But because you weren't able to speak to me,
Interruptions had come - when you wanted your tea!

This morning, the wind was crisp and chill,
And I knew you bore me no ill-will,
But you just couldn't open the door of the shed,
To curl up and sleep in your cosy bed! ...

And again you forgave me. Though misunderstood,
Your stout little heart sees nothing but good
In a frail human being, who does of her best,
But quite often falls far short of the test.

Your example can teach us Life's Creed to fulfil,
With patience and tolerance, love and goodwill;
If only we humans could trust and forgive,
And discover your secret - HOW TO LIVE!

(Elmer Stone)



EDITORIAL

Christmas is upon us already! I'm in my usual state of disaray for this time of year - that's my excuse for the newsletter being late, anyway. Just over a week ago, the annual G.S.P. Club Parade was held at Hawthorndene Oval. The weather could have been a little more obliging, however we managed quite well to dodge the early morning showers. We were fortunate to have the benefit of a pavilion. The parade ran quite smoothly, and we had a very tasty array of food for lunch. Congratulations to all those who won prizes - especially to the budding junior handlers. Results will appear in the next newsletter.

Our 1989 "Wendy Newbury Memorial" Championship Show (13th May) is being held in conjunction with other Group 3 clubs as a 'Gundog Weekend'. (See inside front cover). If anyone is willing to donate trophies or shashes for this show, IT WOULD BE GREATLY APPRECIATED. Please contact Anne Pelgrave on 2762637 if you can help. We will be raffling a basket of goodies at the show so make sure you get your ticket.

** Really, I'm not drunk!*

Our anonymous literary genius has once again put finger to typewriter and donated yet another article on Non-Slip Retrieving (for which I am most grateful).

Whilst on the subject - the Club will be holding a TRAINING DAY as an introduction to retrieving on Sunday 12th February (See notice in this newsletter). It's basically for beginners, and if you're interested in some basic show and obedience training as well, make sure you come along (with your G.S.P., of course). Raylene Smith has had many years of experience showing G.S.P.'s and also training for obedience and retrieving, so if you've got a problem in any of these areas, or are just starting and would like to set out on the right foot - SEE YOU THERE!

Wishing everyone a very Merry and SAFE Christmas and New Year the Ed.



Summer Barbecues...

Ginger prawns

1 kg peeled green prawns

Marinade

½ cup olive oil
½ cup lemon juice

1 chopped onion
1 tablespoon minced garlic
1 tablespoon minced ginger
1 teaspoon chilli powder

Blend all the marinade ingredients in a food processor. Marinade the prawns for at least one hour. If the prawns are small, thread three or four on kebabs, larger ones can be cooked on their own.

Cook them in the kettle with the lid on or grill on a griddle with a low flame.

Sesame prawns

1 kg peeled green prawns

Marinade

½ cup soy sauce
½ cup finely chopped
spring onions
¼ cup sesame oil

¼ cup water
½ tablespoon minced garlic
1 and ½ teaspoons ground ginger
½ teaspoon grated nutmeg

Mix the marinade, add the prawns and proceed as for ginger prawns.

Whiting and smoked salmon kebabs

500 gm small skinned whiting fillets

250 gm sliced smoked salmon
1 tablespoon oil
1 tablespoon lemon juice

Lay the whiting fillets out flat and place a slice of smoked salmon on top of each fillet. Brush the smoked salmon with lemon juice.

Roll the fish up swiss roll fashion and thread two or three rolls on to each skewer. Brush with oil and cook as for ginger prawns.

Game meat kebabs

There is a shop in Market Plaza opposite the Foodland supermarket that specialises in game meats and birds. Kangaroo, buffalo and venison are regularly available.

2 kg lean game steaks
10 rashers back bacon
the outside layers of four
large onions

500 gm very large mushroom caps
Pack the kebab mould with alternate layers of the above ingredients.

Marinade

2 onions chopped
4 tablespoons oil
1 teaspoon salt
½ teaspoon pepper
2 cups tomato puree
4 tablespoons tomato chutney
2 tablespoons worcestershire sauce
2 tablespoons vinegar

Marinate the game only for one hour before making the kebabs or marinate the whole kebab after making them. Cook in a kettle with the lid on for 20-25 minutes using indirect fire.



'Courtesy costs nothing, but it will bring rich rewards in happier working conditions and reciprocated goodwill.'

COMING EVENTS

TRAINING DAYS: 12th February - Training for Retrieving, Show & Obedience (see next page).

19th March - Retrieving training - details yet to be finalised, will be in the next newsletter.

BADGE DAY: GUIDE DOGS FOR THE BLIND - If you would like to help selling badges, please 'phone Anne Pelgrave on 2762637
THE DATE: Friday, 10th March

A.G.M.: Saturday 11th March, 7pm at Anne Pelgrave's. B.Y.O. meat (for BBQ), salad, drinks and bathers - pool is supplied - and children are welcome. End of year awards will be presented on the night. Please come and support the Club.

G.S.P. CHAMP. SHOW: Saturday, 13th May 1989 at Tubemakers Oval.



NON-SLIP RETRIEVING TRIALS.....

WITH....BUG R. LUGGS

The Retrieving season isn't too far off, our first Non-Slip Retrieving Trial is not until May and other clubs will be holding trials also throughout the Winter and Spring months. This year we plan to hold several practice days, possibly as early as February... These days are usually of a picnic style with some of the experienced triallers giving assistance to the beginners... It is not necessary that you have a gun, or a licence to use a gun, just some patience to learn what Retrieving is about... Your dog should have some basic obedience skills also, and there is no age limit on the dog.

We are lucky to have access to very suitable properties with in about 30 minutes of the city and we thank the owners for the use of their properties... Dates of these practice days will be notified later, or, phone any of the committee who should be able to give you the information... Some of the other gundog breed clubs also have practice days before the season begins, and our club members are usually invited to attend.

As an early introduction to the new Retrieving season a film night was held at Doug and Dianne Campbell's home on 18/11/88. We thank Mick Munday for his time and invaluable advice. Mick had two video films to show us, both showed the training of dogs for retrieving and it was great to see the young pups using their instincts in the field... After the films Mick was most helpful, and patient, explaining some of the finer points, and also pointing out where we have gone wrong in our training of our dogs.

Those of us who attended also thank Doug and Dianne for the use of their home on the night.

So, once Xmas is out of the way and you are wondering what you can do to keep you and your dog fit and amused, why not give Retrieving a try!

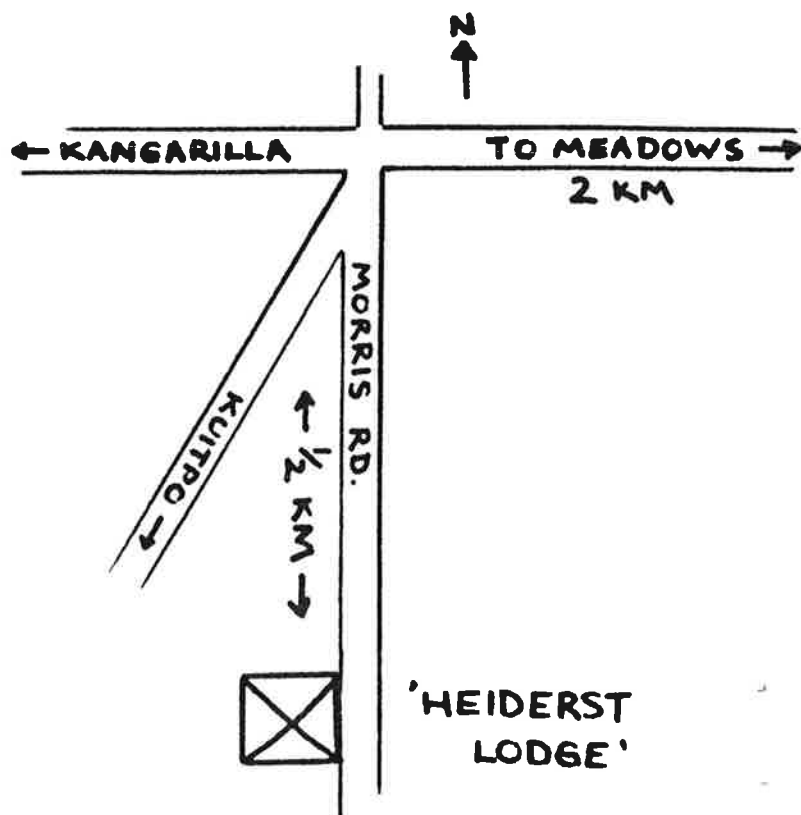
* TRAINING DAY *

SUNDAY 12TH FEBRUARY

IF YOU ARE A NEW MEMBER, HAVE A YOUNG DOG, OR WOULD LIKE AN INTRODUCTION TO A NEW ACTIVITY WITH YOUR DOG :- **INTRODUCTION TO RETRIEVING, OBEDIENCE + SHOWING** - PLEASE FEEL WELCOME TO ATTEND THIS TRAINING DAY.

FOR MORE DETAILS, 'PHONE

RAYLENE SMITH: **3883129**



Extract from: "THE COMPLETE GERMAN SHORTHAIRED POINTER"

(I have been browsing through this book, and thought it interesting enough to include this extract in the newsletter. The Germans seem to explain WHY they are looking for a particular type of conformation in their G.S.P.s. The book was apparently written in the very early 1900's, in German, and latter translated into English, which at times makes it a little difficult to understand. This particular edition was published in 1951. The German standard has obviously changed since then, the most obvious instance being their referral to only 'brown' dogs (black is now an acceptable colour)... Ed.)

In the following chapter we reproduce the Standard of the breed devised by E. v. Otto at the instance of the club "Shorthair", which is still now valid in all points:

(Extract from Pedigree Register "Shorthair", Volume 6, issued 1902).

THE SHORT-HAIRED GERMAN POINTER

1. General Appearance.

"The general appearance is that of a noble symmetrical dog, whose form displays power, perseverance and speed. He shall be neither small or strikingly big - too big dogs are long-legged in most cases and thence rarely persistent - but in medium size like the hunting horse: "though short of back, stand over much ground".

Plump and cloddy dogs are to be rejected; at first glance the dog should at once mediate the impression of being vigorous (but not nervous) and his movements appear as a whole. Systematical breeding and advancement show up not only in the anatomical equipment for moving rather than in the nobility of his whole appearance, stylish build, dry head, well carried tail and taut skin.

Well laid back shoulders and a straight stretched back, a deep chest and strong hindquarters indicate speed, while persistency is warranted by good condition in bone, an adequate width of chest and a well developed musculation all over the body.

2. Head.

Dry, not creasy, of medium size; neither too light nor too heavy. The skull of ample breadth shows an equally rounded arch; occiput and junction of neck not strikingly developed. Back of muzzle broad, and straight or slightly arched when viewed from aside; forehead from its joint line with the muzzle gradually slanting upward: the frontal bones seen from the side, form a visible set-off.

The muzzle should be of adequate length so to enable the dog to get a firm grip on game and to carry it over long distances; too long a muzzle is as little desired as if too short. The front surface of the muzzle should nearly form a rectangle with the top line of the muzzle; pointed muzzles are therefore entirely discarded.

Flews should not overlap too much, but should form a noticeable fold at the corner of the mouth; strong jaws with well developed chops and muscles. The bite should be very powerful and all teeth sound; the molars should accurately fit into one another, the incisors touch each other for grating.

The whole of the head should never evoke the impression of tapering to a point; depth and length at the muzzle as well as in the skull itself should be in a correct proportion to each other.

3. Ears.

Moderately long, neither padded nor too fine; set on high and broad, hanging down from the head smoothly and scarcely leaving any space between; lower ends blunt and rounded.

The ears shall reach approximately as far as the corners of the mouth, if laid to the fore without tearing.

-2/.....

4. Eyes.

Of medium size, vivid and expressive, good-natured and yet with a definite expression; crossed exactly in the corners of the eyes, showing nothing or little of the conjunctiva tunica and not lying deeply either. The best colour is a beautiful brown; light yellow ("birds-of-prey") eyes are less desirable.

5. Muzzle.

Brown; the greater the better. Nostrils well opened, broad. Flesh-coloured and speckled muzzles that will occur in dogs with a great deal of white, are not desirable.

6. Neck.

Of medium length, very muscular. Dry and slightly curved, gradually broadening towards the shoulders. Skin feasibly taut; free on all accounts from any noticeable dewlap.

7. Chest and Rib-cage.

The chest on a whole shall convey the impression of depth rather than breadth and withal be in correct relationship with the other parts of the body. The rib-cage is built by well arched ribs that are not as flat as in the whippet, but are never quite round nor barrel-shaped; completely rounded ribs do not allow adequate expansion for breathing. To the rear, the ribs extend sufficiently downward, the lower stomach line is satisfactorily tucked up to give the required space for galloping; all that without the suggestion of lankness. The circumference of chest in the zone adjacent to the elbows towards the rear (harness depth) is and has to be less than, for example, at a hand's breadth behind the elbows in order to permit the shoulders to move freely.

8. Back.

A taut back is of ultimate importance for abrupt movements and for persistently moving as well; it must therefore not be long. The loin area should be short and but slightly curved; strong arching interferes with freedom of action and speed. Thence special stress should be put on selecting dogs from the breeding stock with a firm straight back and a short and strong loin area; dogs that are too long in back have to be eliminated. The croup should be broad and adequately long, neither over-built nor appear cut off short, starting on equal level with the back and gradually slope down toward the tail.

9. Front Quarters.

Shoulders slanting, long movable, exhibiting hard musculature; shoulder-blades flat lying tightly to the body. Front legs standing sufficiently under the trunk, elbows placed low, neither turned in nor out. Underarm straight and dry, adequately muscled, strong though not coarse in bone. Pasterns but little slanting, almost straight, should never stand perpendicular to the ground.

10. Hind Quarters.

Thighs well and drily muscled; correct angle between lower thigh and hock; lack in obtuseness of angle detracts from endurance. No indication of cow-hocks. The tarsus should be strongly developed and almost vertically placed under the hock joints.

* B I T E *

A. Scissor Bite Desired as strongest and least wearing. The inner surfaces of the upper incisors contact the outer surfaces of the lowers. There is a relatively tight meshing of the incisors and canines (eyeteeth). The premolars do not touch; this is 'carrying space'.

B. Even, level or pincers bite. The direct edge-to-edge meeting of the incisors is quite wearing. Usually only the centre two pairs will so touch; it is normal in both scissors and level bites for the third pair (nearest the eyeteeth) of uppers to have a slightly wider-set, outward-turning position somewhat resembling the eyetooth.

It is not uncommon for the centremost two lower incisors, and occasionally others, to be slightly out of line with their neighbours. Such minor irregularities should not be unduly penalised.

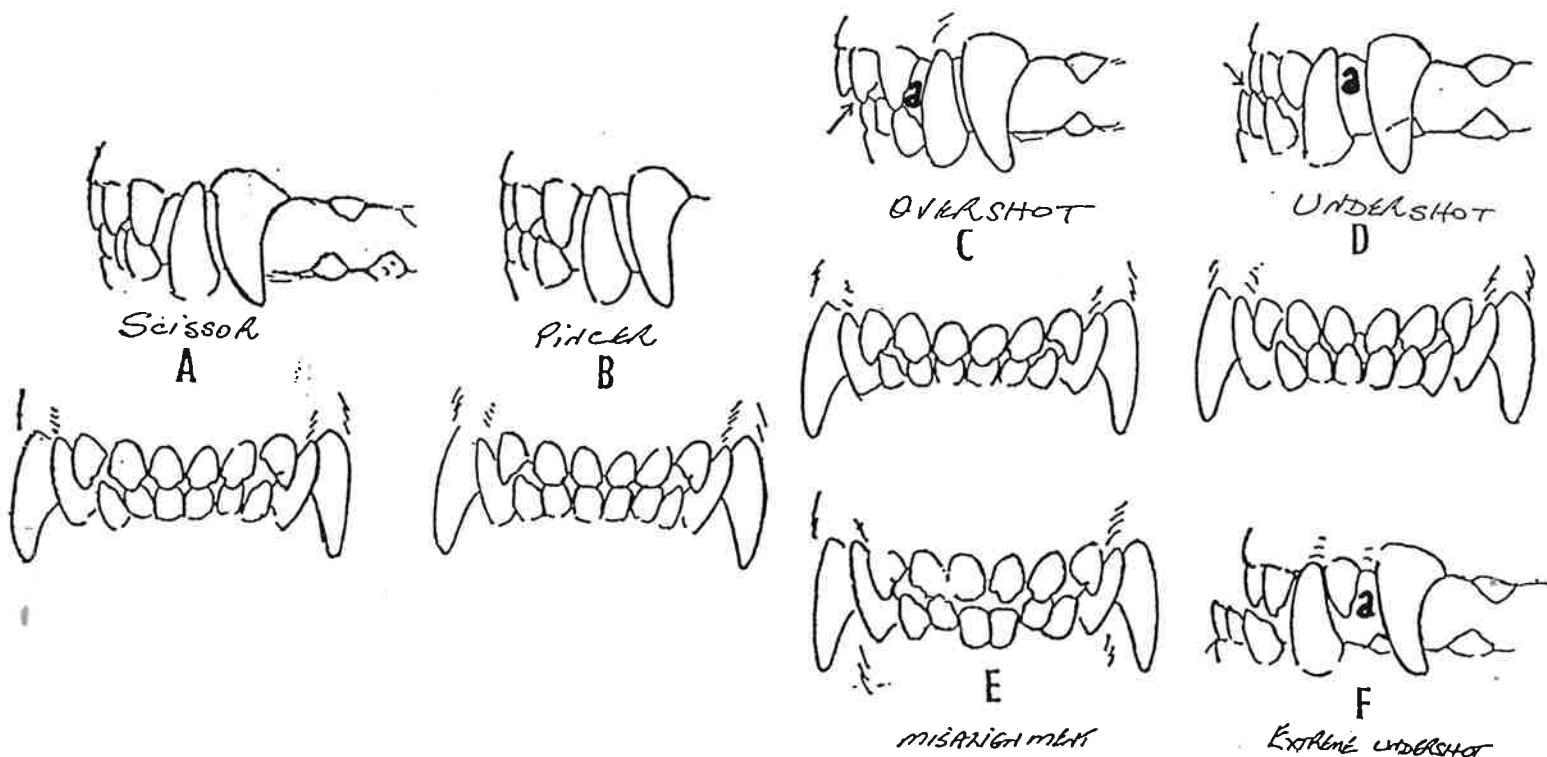
C. Overshot. The incisors of the upper jaw overlap and fail to contact the incisors of the lower jaw. "Pig Jaw". There is often a noticeable space at 'a'.

D. Undershot. A forward set or extra length of lower jaw causes the incisors of the lower jaw to overlap or project beyond the incisors of the upper jaw when the mouth is closed. Generally there is a more or less considerable space at 'a'.

In both undershot and overshot jaws the condition is the result of an abnormal relationship of the upper jaw to the lower (or vice versa). The discrepancy is often noticeable in the incorrect meshing of molars and premolars as well.

E. Misalignment of Teeth of lower jaw. Central incisors markedly out of line, forward of the rest of the lower teeth. This in itself does not constitute undershot bite. Undershot or overshot mouths may or may not have misaligned teeth.

F. Extremely undershot mouth. The lower canine should occupy the space 'a' but the lower jaw is set too far forward. Such a dog will have difficulty in eating, and bitches hampered in caring for puppies.



TEN COMMON CAUSES OF FIELD TRAINING PROBLEMS by Susan Hawxhurst

1. MAKING THE TRAINING SESSIONS TOO LONG:

I cringe when people tell me, "we throw his ball for him till he gets tired and lies down, and then we figure it's time to quit". Wrong. The time to quit is before the dog shows signs of being tired or disinterested. By keeping the lessons short we instill that desire to keep going that a good retriever needs. When we work a dog until he refuses, we teach him that he can quit whenever he feels like it, and the only remedy for that is force-breaking. Therefore, to prevent this problem from developing, we must motivate a puppy or young dog to keep going and to keep trying. With young puppies I never throw more than three retrieves for them at any single training session. I never make them "stay". On the contrary, I wave a dummy in front of them to work them into a frenzy, saying "Hey! Hey!", then when I have their undivided attention, I throw it a short distance, with an excited command such as "Fetch!" I always end the session by teasing the pup with the dummy, but not letting him have it. His last memory of each session is "I wanted to keep working but she decided to stop. I can't wait to work again!"

2. ENDING A TRAINING SESSION ON A NEGATIVE NOTE:

From what I've already written, you will have gathered that you don't want to end a workout because the dog is too tired or bored to go again. You create a serious attitude problem if you allow a session to end on a refusal. In effect you have taught the dog how to seize control of the authority, and now he is teaching you that he can turn the lesson on or off as his mood dictates. Likewise, you never want to end a session when you have just disciplined a dog for failure to perform a task correctly. First you must decide whether his failure was a result of defiance or confusion. Then you must decide whether a correction is in order. But show the correct response and praise him lavishly. If he just can't get it right, break the task up into smaller parts. Back up to the part he seemed to perform correctly, repeat it, PRAISE him, and go no further that day. There's always tomorrow!

3. SCOLDING AN IMPRESSIONABLE RETRIEVER PUPPY FOR THE FOLLOWING:

Carrying shoes, socks, wadded-up paper etc. Remember ... he's a retriever. It is in his nature to want to hold things in his mouth. If you discipline him for that now, how are you going to make a retriever out of him when he grows up? Please don't teach your pup the command "drop" either, or you'll have an ordeal on your hands when it's time to learn how to deliver to hand. Dropping dummies or birds is a tough habit to correct. Remove your valuables from the floor, take the wadded paper etc. from the pup's mouth, and replace it with one of his toys. Playing in puddles, water bowls, etc. is also natural. It can be a real pain to have a pup who goes out of his way to run through puddles, but if you want that dog to retrieve ducks, you had better not throttle him for demonstrating his love of water! Keep the lid down on the toilet, give him a weighted water bowl with paper towels underneath if he's a 'digger', and keep him leashed when you approach a puddle.

TEN COMMON CAUSES OF FIELD TRAINING PROBLEMS Cont....

4. STEADYING A PUPPY TOO EARLY:

Impose this restraint too early and your dog will run like he has lead in his tail for the rest of his life. Never steady a pup until he is motivated to run hard with total obsession to retrieve. I want them running hell-bent for leather before I impose that restraint on them. Restraint always causes resentment. Not only is it impossible to put style back in a dog who is overtrained and overcontrolled, but a slow, plodding dog has time to think about what he is doing. My dogs are encouraged to act rashly and recklessly as pups ... it gives them less opportunity to exercise their options!

5. THROWING STICKS, PLAYING TUG OF WAR, OR LETTING THE PUP CARRY OFF HIS RETRIEVED OBJECTS TO CHEW ON:

Guess what will happen when he moves on to something really enticing, like ... birds?

6. STARTING WATER WORK IN CHILLY WEATHER:

Wait until summer. Either wade in with him yourself or let another dog he likes to romp with entice him in. DO NOT ask him to retrieve until he learns to relax in the water and swims with his front paws in the water. Inexperienced pups tend to swim with straight backs, their front legs splashing frantically. The splashing prevents them from seeing the dummy in front of them and they will push it further away, until the pup becomes exhausted and discouraged. When the pup is swimming smoothly and confidently, wade out in the water with him and toss the dummy in front of him. Encourage him to reach for it and lavish on the praise when he does. The next step is to throw it a few feet in front of his nose. If the pup can do this, you are ready to go back up to the water's edge and make your throw a bit longer. This gradual introduction should have your dog entering the water with confidence.

7. IMPROPERLY INTRODUCING THE GUN:

From a safe distance, let your pup watch other dogs retrieve, with the gunner at a considerable distance in the field (100-150 yards). Gradually move your pup closer. Use a blank pistol at first, before introducing the shotgun. Many cases of gunshyness have been linked with introducing gunshot with a .22. The whining retort of the .22 can be terrifying to certain pups. Gunshyness is difficult to cure. Proceed very cautiously. A final warning ... protect your pup from fireworks. Kids are not above tossing firecrackers into one another's yards, oblivious to the presence of a puppy. The result could be disastrous.

8. WORKING IN THE SAME PLACE EVERY DAY:

This will not only cease to challenge your dog, but will make him too insecure to work at all when he finally does go somewhere else. You need changes of terrain, obstacles to run over, and even different people to train with. He has to learn to ignore distractions. Your dog needs total concentration of his task. If he is always distracted or threatened by unfamiliar places or people, you will never be able to rely on him in competitive situations, such as obedience or field trials, or even working tests.

TEN COMMON CAUSES OF FIELD TRAINING PROBLEMS Cont....

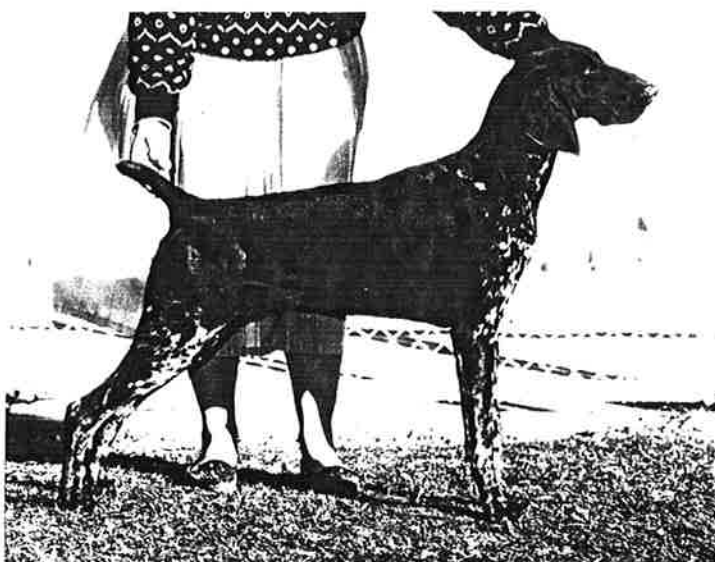
9. ALWAYS THROWING THE TRAINING DUMMY YOURSELF:

The dog will learn to run out only so far as your average throw, then hunt that area. A retriever who is calibrated to run 50 feet is somewhat limited in hunting or trial competition, to put it mildly. Get someone to walk out in the field and throw the dummy for you, so that your dog will have opportunities to learn how to gauge approximate distance, sharpen his marking ability, use his nose, etc.

10. LETTING MORE THAN ONE PERSON WORK WITH AN INEXPERIENCED PUP:

If your pup is still learning the basics, don't let everyone in the family take turns with him. There's always a chance that the lessons will drag on too long. Usually, there is little consistency from one person to another. The pup is bound to become confused. Likewise, if the pup is sent to a professional trainer, don't bring the pup home to visit until the training is accomplished.

(From Victorian Gundog Club newsletter)



Congratulations to:

HEIDERST STORM CLOUD

(L. O'Malley) on winning

Top Showing Gundog Puppy 1988
(Gundog Club of S.A. Inc.)



Congratulations to:

CH. MORUADA MANHATTAN (N)

(Smith/O'Malley) on winning

Top Showing Gundog Male 1988
(Gundog Club of S.A. Inc.)

Best in Show 22-10-88

Best in Group & Intermediate
in Show 23-10-88

Intermediate in Show 10-10-88

SHOW RESULTS CONT.....

| <u>CRATER CITY KENNEL CLUB</u> | <u>23/10/88</u> | <u>MRS ARCHER (NSW)</u> |
|--------------------------------|----------------------------------|-------------------------|
| Dog CC & BOB | CH MORUADA MANHATTAN (N) (25) | Smith/O'Malley |
| Res CC | HEIDERST STORM TROOPER | K Drew |
| Bitch CC | CH HEIDERST DRESS'D IN STYLE (8) | R H Smith |
| Res CC | CH HEIDERST DRESS T' IMPRESS | R H Smith |

** BEST IN GROUP & INTERMEDIATE IN SHOW - CH MORUADA MANHATTAN (N)

| <u>McLAREN FLAT A & H SOC</u> | <u>29/10/88</u> | <u>MRS S ARNOLD (SA)</u> |
|-----------------------------------|-----------------------------|--------------------------|
| Dog CC & BOB | CH BIRDRISE ZIG'S IMAGE (7) | Salter/Raymond |
| Res CC | KATIDID ESCRIBIENTE | J McDonald |
| Bitch CC | KAZIA TOPAZE TIARA (7) | L Cameron |
| Res CC | HEIDERST STORM CLOUD | L O'Malley |

** This win gave KAZIA TOPAZE TIARA her title well done.

** BABY IN GROUP - MARKHEIM GAIETY GIRL

| <u>COLOMEKE KENNEL CLUB</u> | <u>30/10/88</u> | <u>MRS D PATTERSON (SA)</u> |
|-----------------------------|-----------------------------------|-----------------------------|
| Dog CC & BOB | CH BIRDRISE ZIG'S IMAGE (9) | Salter/Raymond |
| Res CC | CH BURNBROOK STORM BOY (W) | M & G Byrne |
| BITCH CC & RUPBOB | CH HEIDERST DRESS T' IMPRESS (11) | R H Smith |
| Res CC | CH KAZIA TOPAZE TIARA | L Cameron |

** BABY IN GROUP - VALACHE SILK DEGREES

** AUST BRED IN GROUP - CH BURNBROOK STORM BOY

| <u>MILLECENT KENNEL CLUB</u> | <u>5/11/88</u> | <u>MR G WHITEMAN (SA)</u> |
|------------------------------|----------------------------------|---------------------------|
| DOG CC & BOB | CH MORUADA MANHATTAN (N) (10) | Smith/O'Malley |
| Res CC | CH TRUPOINT THE DIPLOMATE | P & D Birthisell |
| Bitch CC | CH HEIDERST DRESS'D IN STYLE (8) | R H Smith |
| Res CC | BRIOCHE DARK DAMSEL | J & L Blacker |

** JUNIOR IN GROUP - HEIDERST STORM TROOPER

SHOW RESULTS CONT.....

NARACOORTE KENNEL CLUB

6/11/88

MRS Y BATCHELOR (SA)

| | | |
|--------------|-------------------------------|----------------|
| Dog CC & BOB | CH BIRDRISE ZIG'S IMAGE (11) | Salter/Raymond |
| Res CC | CH BURNBROOK STORM BOY | G & M Byrne |
| Bitch CC | HEIDERST DRESS'D IN STYLE (9) | R H Smith |
| Res CC | BRIOCHE DARK DAMSEL | JL Blacker |

** OPP SEX IN GROUP - CH BIRDRISE ZIG'S IMAGE

** BABY IN GROUP - VALACHE SILK DEGRESS

ALL BREEDS DOG CLUB

20/11/88

MR F KEYS (VIC)

| | | |
|-------------------|-----------------------------------|----------------|
| Dog CC & BOB | CH MORUADA MANHATTAN (N) (10) | Smith/O'Malley |
| Res CC | CH BIRDRISE ZIG'S IMAGE | Salter/Raymond |
| Bitch CC & RUPBOB | CH HEIDERST DRESS'D IN STYLE (13) | R H Smith |
| Res CC | CH SHEREPOINT CARLEY SIMON | J & R Bryant |

** RUNNER UP IN GROUP - CH MORUADA MANHATTAN (N)



Congratulations to:

CH. KAZIA TOPAZ TIARA on gaining her showing title on 29-10-88 under Mrs. S. Arnold. She is owned by Lesley Cameron and handled by Anne Raymond.



Congratulations to:

CH. FERLACH WOODIE on gaining his showing title during October. (Sorry, I don't have any details). "Woodie" is owned and handled by Carol Holland.

TROPHY SCORES

TOP SHOWING G.S.P MALE

| | | |
|------------------------------|----------|--------------------|
| CH MORUADA MANHATTAN (N) | 220 (10) | Smith/O'Malley |
| CH BIRDRISE ZIG'S IMAGE | 146 (10) | Salter/Raymond |
| CH HEIDERST MI RUFIAN QC,CDX | 72 (7) | R H Smith |
| HEIDERST STORM TROOPER | 17 (2) | K Drew |
| FERLACH WOODIE | 16 (3) | C Holland |
| MARKHEIM FIRST KNIGHT | 10 (1) | C&S Salter/Raymond |

TOP SHOWING G.S.P BITCH

| | | |
|------------------------------|----------|---------------|
| CH HEIDERST DRESS'D IN STYLE | 132 (10) | R H Smith |
| CH VALACHE VON DER HJORDIS | 92 (5) | G & A Raymond |
| CH HEIDERST DRESS T' IMPRESS | 90 (8) | R H Smith |
| CH SHEREPOINT CARLEY SINON | 81 (6) | J & R Bryant |
| CH KAZIA TOPAZE TIARA | 46 (5) | L Cameron |
| KAZIA ZIGGY'S STAR DUST | 10 (1) | P & S Carter |
| BURNBROOK QUILOTA | 9 (1) | S &R Schwerdz |
| HEIDERST CHOCLAT CONFETTI | 9 (1) | J Wilkins |

RUVALAN TROPHY (TOP SHOWING G.S.P)

| | | |
|------------------------------|----------|----------------|
| CH MORUADA MANHATTAN (N) | 277 (10) | Smith/O'Malley |
| CH BIRDRISE ZIG'S IMAGE | 209 (10) | Salter/Raymond |
| CH HEIDERST DRESS'D IN STYLE | 144 (10) | R H Smith |
| CH SHEREPOINT CARLEY SIMON | 107 (6) | J & R Bryant |
| CH HEIDERST DRESS T' IMPRESS | 106 (8) | R H Smith |
| CH VALACHE VON DER HJORDIS | 95 (5) | G & A Raymond |

ERIC DELL TROPHY

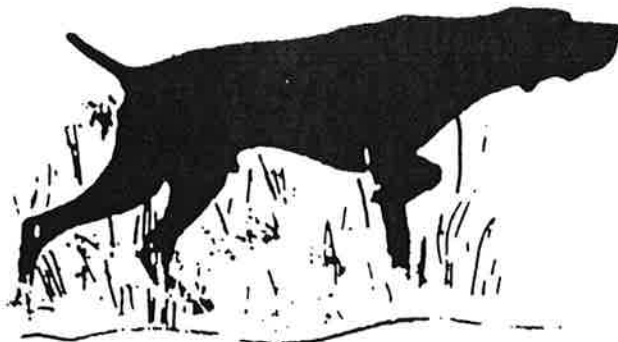
1. HEIDERST MAGDA QC,CDX,E.T
2. MARKHEIM XEGAN'S ESCORT

TOP RETRIEVING BITCH

1. HEIDERST MAGDA QC,CDX,E.T.

TOP OBEDIENCE BITCH

1. HIMARK BELLA DONNA CD,CDX.



IF YOUR DOG HAS QUALIFIED FOR ANY OF THESE AWARDS PLEASE SEND THEM TO ME. LIAT O'MALLEY.....

☆ HEIDERST ☆
GERMAN SHORTHAIRED POINTERS

WISH TO CONGRATULATE

☆ HEIDERST STORM CLOUD ☆

☆☆ TOP SHOWING GUNDOG PUPPY 1988 ☆☆



This is our 5th 'GUNDOG PUPPY OF THE YEAR AWARD' (Gundog club of S.A inc)
and our 3rd consecutive year.

CH HEIDERST MI SALAMANCA S.A's top challenge winning bitch . Her self a TOP SHOWING
GUNDOG BITCH winner, Congratulates her daughter CLOUDY on her great win.....

AUST CH MORUADA MANHATTAN (N)

SOME OF MATTY'S WINS FOR 1988

BEST IN SHOW (Gundog Club SA Champ. Show)
BEST IN SHOW (G.S.P. Club SA Champ. Show)
3 BEST IN SHOWS (All Breeds Champ. Shows)
6 BEST IN GROUPS (Champ. Shows)



☆ STOP PRESS ☆
☆☆ TOP SHOWING
GUNDOG MALE
1988 ☆☆☆

Sire: CH MORUADA WOTTA KRAKKA (N)

Dam: CH WILDHEART GRATIN (N)

MATTY, at the age of 2½ years, has an incredible show career to date. Combining soundness and correct breed type, he has won under local, interstate, overseas and Gundog specialist judges.

| | |
|-----------------|--------------------------|
| 6 BEST IN SHOWS | (All Breed Champ. Shows) |
| 1 BEST IN SHOW | (G.S.P. Champ. Show) |
| 1 BEST IN SHOW | (Gundog Champ. Show) |
| 2 BEST IN SHOWS | (Gundog Open Shows) |
| 1 BEST IN SHOW | (S.A. Sporting) |

12 BEST IN GROUPS

MATTY was top Gundog Puppy 1986 & 1987, he was Aust. Top G.S.P. & Top Gundog in S.A. (National Dog; Gundog of the Year award). Matty is without a doubt South Australia's top winning liver German Shorthaired Pointer.

OUR STUD TEAM: CH HEIDERST MI RUFIAN QC CDX (S.A.s top winning G.S.P.)
CH MORUADA MANHATTAN (N)
CH BURNBROOK STORM BOY (W) (Top Show G.S.P. W.A. 1988)
CH BURNBROOK CROESUS (W) (BIG & Opp. Sex in Show winner)
HEIDERST STORM TROOPER (O: Kerry Drew, CC & BOB winner)

OWNERS: RAYLENE SMITH & LIAT O'MALLEY

☆☆ HEIDERST ☆☆
GERMAN SHORTHAIRED POINTERS

