
Stock Horse of Texas Association



2008 HANDBOOK

DEDICATED TO ENHANCING THE PLEASURE
OF OWNING AND RIDING HORSES
THROUGH CREATING
BETTER HORSES AND HORSEMEN

OUR ASSOCIATION'S GOAL IS SIMPLE:
HELP PEOPLE RIDE A BETTER HORSE

www.stockhorsetexas.org

Stock Horse of Texas (SHOT) Founding Philosophy

The Stock Horse of Texas Association premise is the result of hours of careful planning by a group of interested horsemen and breeders who felt that there was a need for a program structured toward helping people improve their skills and ride better horses.

The **SHOT** organization was created by an industry task force of breeders, ranchers, organization representatives and educators that were interested in the future of the horse industry. The first official directors and officers were appointed by the leadership team in 1998; to carry on and conduct future business of the Stock Horse of Texas Association and its membership. The Association became a non-profit organization, The Stock Horse of Texas Foundation, Inc. in 1998.

This founding group of individuals was cognizant of the fact that many interested horsemen are unable, through situation or locations, to have access to professionals who might instruct them or train their horses. Yet, everyone who rides a horse has a tremendous interest in becoming capable of improving both himself and his horse. It is this group of horsemen that our organization is concerned with. We believe our program is designed to help everyone in it.

First of all, we have set goals and standards for what we feel is the all around “broke” western stock horse. We have defined this stock horse and want to provide opportunities to exhibit and promote this type of horse. Through a series of tests, competitive events, and other activities, we offer evaluation of both the horse’s and rider’s skills; helping to determine successes, weaknesses, and progress toward goals. The Stock Horse of Texas Association conducts several types of events to promote, teach and evaluate these “broke” stock horse standards and goals.

Secondly, we not only want to exhibit this “broke” horse, we want to show horsemen how to break and train him. We want our events to both show the horse in competitive events as well as provide instruction on breaking and training a “broke” stock horse.

We, in the Stock Horse of Texas Association, are not at all interested in a “one-event specialist.” **We believe that the ideal Western Stock or Ranch Horse must be proficient in many areas of everyday ranch work and to be, quite frankly, a true all-around horse. It is to this type of horse that our entire Stock Horse of Texas Association program is directed.** If you study the following descriptions of our competitive events, as well as the judging standards for them, you will, immediately, become aware of the fact that it takes a “broke horse” to do them well.

We, in the Stock Horse of Texas Association, believe that our program is a good one and is needed. We also believe that anyone who participates in it will be happy they joined our group. It is the true way to have fun riding and training your horse.

Stock Horse of Texas (SHOT) Program

An innovative partnership between Texas horse users, breeders, ranchers, associations, organizations, stock shows, sales companies and colleges; facilitated through Texas Cooperative Extension, Texas A&M University System ;to meet the present and emerging needs of and continuously strengthen the Texas western stock horse industry.

Clinics: Offer riders affordable, fun and standardized riding clinics in various locations in the state, where stock horse maneuvers are identified and rider knowledge and skills are taught (to maximize horses trainability, performance and safety), so that riders can develop nicer horses, improve their on-the-job performance, and enhance their riding pleasure.

Competitions/Evaluations: Offer riders standardized, practical, low-key, low-cost measurement tests, where horse performance is measured against a clearly defined standard, and rider skills are assessed against a proficiency standard, so that riders can make maximal rider skill progress in the most time efficient manner

Promotion and Sales: Support sales companies and offer breeders and ranchers additional private treaty and public auction opportunities, where prospects and trained horses (at various levels) can be more objectively evaluated, promoted and sold with both seller and buyer satisfaction of highest priority.

Organization Services: Offer associations, organizations, stock shows, sales companies and other groups and/or individuals, serving stock horse clientele, assistance in planning educational programs and competitions/evaluations, plus provide a forum for routine discussions on industry strengths, opportunities, weaknesses and threats, so that these groups can better serve clientele.

College Services: Offer junior and senior colleges, serving western stock horse clientele, cooperative educational program opportunities and problem solutions (supporting research studies on campus and on farms/ranches), so that college programs can better serve clientele.

Positive Atmosphere: Provide all programs, activities and projects in the atmosphere of honesty, openness, personal growth and politeness toward fellow horseman, where horses are always respected, and where true western tradition is genuinely honored.

General Rules and Regulations

SHOT MEMBERSHIP

The Stock Horse of Texas Association is an incorporated association dedicated to and open to all western stock horse enthusiasts. The Association is open to all stock horse breeds, registered or grade, whether ridden on the ranch, in the ring or down the road. Members are eligible to participate in all Stock Horse of Texas Association events and to vote on directors to the Stock Horse of Texas Association Board.

Upon completion and acceptance of an application form, an applicant is issued a membership card with ID #. This number must be used in all official communication with SHOT and the number must be given to the entry secretary when participating in SHOT approved events. Membership is available for individuals for a one-year period (January 1 to December 31) or by a lifetime membership as follows:

Individual Membership dues	\$25.00/year
LIFE membership	\$500.00

Any false or misrepresented statement on an application or entry shall constitute unsportsman-like conduct and will subject the applicant, exhibitor and/or owner of horse to disciplinary action as set forth in the SHOT handbook.

Current and updated information will continuously be available to members through the organization web site, www.stockhorsetexas.org

Stock Horse of Texas Foundation, INC

The Stock Horse of Texas Foundation, Inc is a non-profit organization, incorporated in the state of Texas in 1998, to provide and administer educational programs for the horse industry.

Television and Media Rule

Every member, by joining SHOT or non-member, by participating in SHOT approved events agrees to allow SHOT or the Stock Horse of Texas Association Foundation, Inc or assigns, licensees, and legal representatives, the irrevocable right to use pictures, portraits, videos or photographs in all forms and in all media and in all manners, for promotion, exhibition, education and any other lawful purpose. This also includes the use of a person's name, voice and biography or horse's name, pedigree and performance record of any person or animal on the premises to promote SHOT's objectives and activities.

APPROVAL FOR SHOT EVENT

An application for and/or request for information regarding a SHOT show, clinic, or event approval shall be made through the SHOT Executive Director, President or their designee. (Approvals shall be made six months before event.) Sanctioned events require compliance with all SHOT fees, guidelines, and documentation

Safety at SHOT Events

SHOT has adopted some safety measures that must be taken for liability reasons.

1. Any unmanageable horse will be asked to leave the grounds. This applies to all horses, but especially to Stallions.
2. Any competitor or clinic participant riding a horse that is out of control will be asked to leave the premises.
3. Judges will have the authority to blow a whistle at any time to stop and or excuse any exhibitor who is not in control of their horse. This is especially critical to the working cow class. The goal of the working cow class is for the horse/rider to control the cow. To accomplish this goal, the exhibitor **MUST** be in control of their horse.
4. Safety of the cattle – We do not want to cause injury to any cattle.

GENERAL RULES FOR COMPETITION

All riders of horses showing in SHOT approved competition or clinics must be members in good standing. When entering SHOT approved classes, entry forms must identify horse and rider with the correct and current membership number.

SHOT COMPETITION DIVISIONS

A SHOT approved show must offer FIVE divisions: OPEN, NON-PRO, LIMITED NON-PRO, NOVICE, and YOUTH.

SHOT competitions are open to any rider with any horse who is a current member, in good standing, of the Stock Horse of Texas organization. Competitions shall be divided into Open, Non-Pro, Limited Non-Pro, Novice and Youth divisions **based entirely on the rider**, regardless of the horse they are riding. A rider may show more than one horse in a division, but HIGH POINT AWARDS shall be based on a one horse/one rider team showing in all four classes

CLASSIFICATION COMMITTEE: A member may petition, in writing, the SHOT Classification committee for a change in division eligibility due to extenuating circumstances. The written petition will be reviewed and the member notified of the ruling. In addition, the committee may reclassify a member for a division.

OPEN:

The Open Division is open to any professional or non-professional member, in good standing, with any horse regardless of past winnings. . In addition to the normal entry fee, this class will have a minimum of \$10 and a maximum of \$20 jackpot fees which will be paid back to winners according to the payout schedule in the SHOT Handbook.

Non-Pro, Limited Non-Pro, Novice and Youth

The Non-Pro, Limited Non-Pro, Novice and Youth Divisions are open to members, in good standing, who have not received money or compensation for riding, training, or showing horses or training riders. ***A horse/rider combination, except youth, may show in only one division at any one show with the exception of the OPEN DIVISION - Any horse/rider combination may show in the OPEN DIVISION at any time. A youth may not show in both the Youth and Novice Divisions at the same show.***

NON-PRO: Non-Pro division exhibitors may show any time in the Open division without losing their eligibility in the Non-Pro division as long as other stipulations of being classified as a non-pro are still maintained. There will be no jackpot in this division.

LIMITED NON-PRO: Limited Non-Pro exhibitors may show any time in the Open or Non-Pro divisions without losing their eligibility in the Limited Non-Pro division as long as other stipulations of being classified as a non-pro are still maintained. There will be no jackpot in this division. Riders in this division will work a shortened version of the cow work which will not involve turns down the fence, circling or roping. (See SHOT Limited Non-Pro Working Cow Horse rules for specifics on rules for this division.)

NOVICE: Exhibitors in the Novice division must have never won a SHOT High-Point or Reserve High-Point Championship at any SHOT show in any division or a SHOT End-Of-Year All-Around High-Point Champion or Reserve All-Around High-Point Champion in any division... There will be no jack pot in this division... If a member loses their novice eligibility through competition, they may finish that year as a novice. In the future, the contestant is eligible only for the Open, Non-Pro, or Limited Non-Pro Divisions. Riders in this division will work a Novice and Youth Reining Pattern and Working Cow Horse Pattern. The cow horse pattern is a shortened version of cow work which will not involve turns down the fence, circling or roping. (See SHOT Novice and Youth Reining and SHOT Novice and Youth Working Cow Horse rules for specifics on rules for this division.)

YOUTH: Exhibitors in the Youth division must be between the ages of 8 and 18 as of January 1 of the current year. Riders in this division will work a Novice and Youth Reining Pattern and Cow Horse Pattern. The cow horse pattern is a shortened version of cow work which will not involve turns down the fence, circling or roping. (See SHOT Novice and Youth Reining and Working Cow Horse rules for specifics on rules for this division.)

Stallions are prohibited in this class.

A horse may be shown in **any** division by eligible riders. A horse may not be shown in any class more than once.

Any reported violation of division eligibility will be reviewed by the classification committee of SHOT. If horse and/or rider are found to be in violation, they may be barred from further SHOT competitions and any year-end awards will be forfeited.

SHOT END – OF – YEAR AWARDS

Year End awards shall be given to the All-Around High Point and Reserve High Point One Horse/One Rider in the Open, Non-Pro Limited Non-Pro, Novice and Youth divisions. Year End High Point Individual Class winners (one horse/one rider) shall also be recognized.

Year End awards will be based on the total number of approved shows minus four (For example: if 14 shows are held during the year, 10 shows or less will be used for total one horse/one rider End-of-Year points.) If an exhibitor competes in ALL approved shows for the year, the shows with the lowest total All-Around points will be dropped in the All-Around.

For End of Year individual class awards, the lowest scores for that class will be dropped.

Stock Horse Of Texas Association Merit Award Program

To Recognize the Versatile Western Stock Horse

Beginning in 2006, the Stock Horse of Texas Association offers a Merit Awards Program to recognize those good versatile western stock/ranch horses that have proven to be consistent over a period of time.

Stock Horse of Texas Association Merit Points:

- **Consistent with other SHOT policies, the Merit award is a joint award for a one horse/one rider combination** earned in either the **Non-Pro or Open Division** in an approved Stock Horse of Texas Association Show.
- **SHOT Merit Points** shall be awarded to a **one horse/one rider team showing in all four classes and based on the number of entries in the All-Around or High Point Division up to a maximum of 10 points.** (Example: horses may receive a maximum of 10 SHOT Merit points for being the high-point horse, 9 points for reserve, and 8 points for third, down to 1 Merit point for placing 10th high overall. If only 8 horses are entered in the All-Around – the high point horse will receive 8 points, down to 1 Merit point for placing 8th high overall.)
- **To receive SHOT Merit Points, a SHOT Merit Points Enrollment Form must be completed** and filed in the SHOT office and **both the rider and the owner must be current members** in good standing of the Stock Horse of Texas Association.
- **A horse may receive points with more than one rider, but the points cannot be added together for more than one rider or transferred to another rider.** Horses that change riders must start over in accumulating Merit points for the Superior or Supreme Awards. Ownership may change, but the rider must remain constant.
- **Superior Stock Horse Versatility AWARD** – May be awarded to a horse/rider team that has earned at least 100 SHOT MERIT POINTS at approved SHOT Shows in the All-Around rankings of one division (either the Open or Non-Pro). This designation shall be noted in the records of the association and certificates presented to both the rider and owner, if different.
- **Supreme STOCK HORSE Versatility Award** – May be awarded to a horse/rider team which has earned at least 200 SHOT Merit Points at approved SHOT shows in the All-Around rankings of one division (either the Open or Non-Pro). This designation will be noted in the records of the association and certificates presented to both the rider and owner, if different.

Both the owner and the rider must be current members in good standing, of the Stock Horse of Texas Association to be awarded Merit Points

A horse/rider team must be enrolled in the SHOT Merit Program by completing the Stock Horse of Texas Association Merit Award Enrollment Form and updating the form as needed. Enrollment Forms can be found on www.stockhorsetexas.org

EQUIPMENT AND ATTIRE

EQUIPMENT:

Horses shall be shown in a stock saddle. Silver equipment will not count over good clean, working equipment. Horses, of all ages, may be shown in a snaffle, bosal, or curb bit. Split reins shall be used with all bits except that a romal is acceptable with a curb bit. No more than one finger is allowed between non-romal reins with curb bit. No fingers between the reins are allowed with a romal. Chin straps are required and the curb chains or straps must be at least ½ inch in width and must lie flat against the horse's chin. No wire curbs are permitted, regardless of the amount of padding or tape. Absolutely no iron will be permitted under the jaws.

Prohibited equipment includes tie downs, cavessons, gagbits, mechanical hackamores and running martingales. A judge may prohibit the use of any equipment deemed to be inhumane.

ATTIRE:

Riders shall wear protective headgear or western hats, long-sleeved shirts and western boots. *Western boots shall include typical cowboy boots and lace-up ropers. All other footwear is prohibited.* The use of spurs and chaps shall be optional. Clothing should be neat and clean.

SCORING

No horse shall be disqualified except for illegal equipment or obvious lameness. A horse will be given credit for what it can do subject to a few standard deductions.

Using two hands on a curb bit will result in a two point run content deduction per maneuver in all classes. Specific deductions are listed with each class.

POINT SYSTEM: The judge must place each class in its entirety. The judge should avoid ties, one-half points are permissible. Specific maneuvers will be designated by the judge to be tie breakers in a class. The tie breaker maneuvers will be made prior to the start of the class and so noted on score sheets for show secretary to use in breaking ties in the class. Every horse in the class is awarded one point for each horse they beat, plus one point.

(Examples: In a ten horse class, the first place horse gets ten points and the tenth place horse gets one point. In a five horse class the winner gets five points and the last place horse gets one point.)

Disqualified horses for equipment or lameness will count as entries in the class, but will not receive points (A class with a disqualified horse: In a twenty one horse class where one horse is disqualified, the first place horse gets twenty one points, the twentieth place horse gets two points and the disqualified horse gets 0 points. The last point is not given because the disqualified horse gets no points.)

This system will be used for any size class.

HIGH POINT TIES:

High Point ties for each competition and year end awards will be broken by awarding the high point award to the horse/rider with the highest placing in the cow horse class. If this doesn't break the tie, the other classes will be used in the following order, reining, trail and pleasure.

ENTRY FEES AND PAYBACK SCHEDULE

It is recommended that novice entry fees be kept as low as possible. Non-Pro, Limited Non Pro, Novice and Youth entries will basically compete for points and class prizes, although, with added money, it might be possible for a payback.

Open classes will be charged the same entry fee as other classes plus an additional jackpot fee. It is recommended that the jackpot fee in each class be a minimum of \$10 and a maximum of \$20 that will be jackpotted and paid back to winners. Fees should be divided into entry fees and jackpot fees.

Half of jackpot fees will be for the class entered and half of the fees will go to the All-Around jackpot.

Class paybacks: Open class entries are competing for class points, plus a payback (½ of the jackpot fee charged for that class) according to the following schedule.

All-Around paybacks: Exhibitors showing in all four classes will be eligible for the All-around paybacks – (½ of all open entries jackpot money). The All-Around paybacks will be figured on the total number of entries in the Open Division, divided by four (4) to ascertain the average class size on which to base the all-around paybacks. Using the average class size, the number of paybacks to exhibitors showing in all four classes will be paid according to the following schedule.

(Example: 52 entries in open division divided by four will equal an average class size of 13 exhibitors and paybacks will go to four exhibitors showing in all four classes.)

(Example: 72 entries in open division divided by four will equal an average class size of 18 exhibitors and paybacks will go to five exhibitors showing in all four classes.)

Exception: If there are not enough exhibitors in the All0Around to match the number that the guide says to pay, move to the next lower payout level.

# of Horses	1-4	5-8	9-12	13-16	17-21	22-26	27-31	32+
Number of places	1	2	3	4	5	6	7	8
1	100%	60%	50%	40%	30%	30%	28%	25%
2		40%	30%	30%	25%	24%	23%	20%
3			20%	20%	20%	18%	16%	15%
4				10%	15%	12%	12%	12%
5					10%	9%	9%	10%
6						7%	7%	8%
7							5%	6%
8								4%
	100%	100%	100%	100%	100%	100%	100%	100%

All SHOT Classes Judging Procedures

A Scribe shall assist each judge by recording the score after each of the maneuvers on the appropriate class score sheet. Specific maneuvers will be selected by judges prior to the class as tie-breaking maneuvers. These maneuvers will be ranked as first tie breaker, second, third, fourth, fifth, etc. Show secretaries will total individual scores and check for accuracy. They will then use the judge's tie breakers in the order listed to place the class on points earned. The class score sheets will then be posted as soon as possible after each class to allow riders to evaluate their performance.

When using two judges the classes will first be placed under each judge and class points awarded. The ultimate class winner will have the most class points from both judges.

Stock Horse of Texas Association Classes

Following is a list of the four classes, designed to measure the versatility of a western stock horse, to be offered at each Stock Horse of Texas competition with descriptions and guidelines for judging:

SHOT Stock Horse Pleasure Class

This class serves to measure the ability of the horse to be functional and a pleasure to ride while being used as a means of conveyance from one western stock horse task to another. This horse should be well-broke, relaxed, quiet, soft and cadenced at all gaits.

The horse should be ridden on a relatively loose rein with light contact and without requiring undue restraint. Excessively long floppy reins will not be given extra credit. The horse should be responsive to the rider and make all required transitions smoothly, timely and correctly. The horse should be soft in the bridle and yield to contact.

Horses shall be shown individually at the walk, trot and lope in both directions. The trot and lope with be extended in one direction only.

The class may be conducted inside or outside of an arena. Markers shall be setup to designate gait changes or called on the public address system. If the class is held inside of an arena, the pleasure course shall be setup to make approximately one pass of the arena in each direction. The pattern may be started either in the left or right direction. The order of gaits shall be:

- 1) Walk
- 2) Trot
- 3) Extended Trot
- 4) Lope
- 5) Stop and Reverse
- 6) Walk
- 7) Lope
- 8) Extended Lope
- 9) Trot
- 10) Stop and Back

The extended trot may be ridden with the rider either posting or standing in the stirrups to the front of the saddle. Holding the saddle horn is permissible, at this gait, as might be done in open terrain. When transitioning from the extended trot to the lope, it is permissible to take the horse back a bit (collecting) before loping. The reverse may be executed in either direction.

Description of Ideal Pleasure Gaits

The ideal pleasure horse will have a level head carriage at each gait – neither too high nor too low.

Walk – A stock horse pleasure walk should be straight, square, flat footed, relaxed and should move out freely with horse looking ahead.

Trot – This gait should be a square two-beat diagonal trot. The trot should be steady, soft and slow enough for riding long distances. Trots which are rough and hard to sit should be penalized. Excessively slow and uncadenced trots should also be penalized.

Extended Trot – The extended trot should show an evident lengthening of stride from the regular trot with the same cadence that will cause an increase in speed. This trot should be level, flat and steady with the appearance that the horse would hold this gait for an extended distance.

Lope – This gait should be a three beat gait that is cadenced, straight and steady and is comfortable to ride over long distances

Stop (from both lope and trot) – The horse should be in the correct stopping position – both hocks engaged and stopping on the hindquarters.

Reverse – A horse should turn briskly and flat with front feet on the ground and holding an inside rear pivot foot.

Extended Lope – This gait should be an obvious lengthening of stride from the previous lope, be at the same cadence and cause an increase in speed. The gait needs to be steady, quiet, and holding the increased speed while being under control.

Part of the evaluation of this class is on smoothness of transitions. There is no advantage to making these transitions with cues that are imperceptible to a judge. These horses are not “trick horses” but rather have been trained to respond to cues. To see these cues applied discretely and the horse responding correctly could be a credit earning situation.

All transitions should be smooth without undue fuss from the horse. Please note that the rules allow for a horse to be taken back (collected) a bit from the extended trot as the horse moves into the lope. The transition from the extended lope down to the trot is very difficult to achieve, however, a good stock horse will have to make this transition several times during a day's work. This transition is down to the normal or sitting trot not the extended trot. Therefore, an extra cue to achieve this gait is expected. Horses that complete this total transition within three strides calmly and obediently should be rewarded. Horses that bring the hocks together to go into a stopping position should be penalized according to the magnitude of the error.

Scoring Stock Horse Pleasure

Each gait, including transitions, will be scored from 1-10. There will be 5 scores in each direction for a total of 10 scores and a maximum of 100 points for each horse's work.

The scoring guide for each maneuver, including transitions, is as follows:

- 1-4 Points – Major faults such as wrong lead, broken gait, lack of control, very poor quality of gait, failure to perform requested gait.
- 5-7 Points – Average quality of movement of gaits and transitions with minor or no faults
- 8-10 Points –High quality mover that is functionally correct in gaits and transitions. Well-mannered and responsive.

SHOT Stock Horse Trail Class

The trail class, as the name implies, tests the horse's ability to cope with many situations encountered in everyday ranch work. The horse is ridden through a pattern of obstacles which should nearly approximate those found on the ranch during the course of everyday ranch work. The horse is judged on the cleanliness, neatness and promptness with which the obstacles are negotiated, ability to negotiate obstacles correctly and attitude and mannerisms exhibited by the horse while negotiating the course. Emphasis on judging should be on identifying the well-broke, responsive, well-mannered horse which can correctly negotiate the course. Management, when setting courses, should keep in mind that the idea is not to trap a horse, or eliminate it by making an obstacle too difficult. All courses and obstacles are to be constructed with safety in mind so as to eliminate any accidents.

COURSE REQUIREMENTS, DEVELOPMENT & POSTING

A. Course will include no less than six and no more than nine obstacles.

It is mandatory that the horse be asked to walk, trot and lope during the course. Walk – can be part of obstacle score and scored with approaching obstacle. Trot – at least 35 ft and scored with approaching obstacle. Lope - at least 50 ft and scored with approaching obstacle and be lead specific.

B. Care must be exercised to avoid the setting up of any obstacles that may be hazardous to the horse or rider.

C. NO EXTRA VERBAL INSTRUCTIONS MAY BE GIVEN TO EXHIBITORS BY MANAGEMENT OR JUDGE THAT IS NOT WRITTEN IN COURSE DESCRIPTION.

Since exhibitors in SHOT shows will be riding up and completing their trail course individually, there will not be a time that all exhibitors can hear or know about extra instructions or credits that the judge might want to use. Any instructions to the exhibitors must be written on the trail pattern and posted before the beginning of the trail competition.

D. Show committees have the option of setting up the trail course to best fit their arena conditions. An outdoor course is recommended if appropriate terrain is available. Each single performance event can be time-consuming, especially with large classes, so it is imperative that time restrictions are placed on this class. The show committee, either through a pilot run or estimation, shall select a reasonable course that can be negotiated in a reasonable amount of time. (4 minutes or less)

E. Judges must walk the course and have the right and duty to alter the course if it is not in keeping with the intent of the SHOT trail class. Judges may remove or change any obstacle they deems unsafe, non-negotiable, or unnecessarily difficult. If any time a trail obstacle becomes unsafe during a class, it shall be repaired or removed from the course. If it cannot be repaired and horses have completed the course, the score for that obstacle shall be deducted from all previous works for that class.

F. The actual trail course cannot be made available to exhibitors or posted prior to the day of competition, but must be posted at least one hour prior to competition. Printed handouts for contestants is helpful and encouraged

G. The course may be walked on foot by the exhibitor or , in the case of outdoor courses, be observed from the outside of the course on horseback, but no horse/rider exhibitors are allowed on the actual course after it has been set until their trail run begins.

TRAIL CLASS OBSTACLE REQUIREMENTS:

A. Course must be designed using the mandatory obstacles and maneuvers plus optional obstacles. Combining of two or more of any obstacles is acceptable.

B. Prohibited obstacles: Tarps, water obstacles with slick bottoms, PVC pipe used as a jump or walk over, tires, rocking or moving bridges, logs or poles elevated in a manner that permits such to roll in a dangerous manner. Animals (live or stuffed) should only be used which would normally be encountered in a ranch setting and which are not used in an attempt to "spook" a horse.

C. Mandatory obstacles or maneuvers:

1. Walk- Overs - Ride over no more than five logs or poles. The space between logs for walk-overs should be 20 – 24" apart and no more than 10"high. These can also be in a straight line, curved, zigzagged or raised.

2. Trot – Overs – Trot over no more than five logs or poles. The space between trot-overs should be 36-42". Poles may be elevated a maximum of 10". These can also be in a straight line, curved, zigzagged or raised.

3. Lope-Overs – Lope over no more than five poles. The space between lope-overs should be 6' to 7'. Poles may be elevated a maximum of 10 ". These can also be in a straight line, curved, zigzagged or raised.

4. Opening, passing through, and closing gate. A gate should be used that will not endanger horse or rider and requires minimum sidepassing.
5. Ride over wooden bridge. (Suggested minimum width shall be 36" wide and at least six feet long). Bridge should be sturdy, safe and negotiated at a walk only. Heavy plywood lying flat on the ground is an acceptable simulation of a bridge.
6. Rope drag – For Open and Non-Pro Horses ONLY. Not to be used in Novice or youth classes. Drag must be a complete figure eight and may begin either direction.

D. Optional obstacles: New obstacles may be added at any time, we welcome any new and different tests which members may come up with provided they can be found in everyday ranch work.

Following is a list of optional obstacles from which selections can be made, but not limited to:

1. Backing obstacles – Backing obstacles are to be spaced a minimum of 28" spacing. If elevated, 30" spacing is required.
 - a. Back through and around at least three markers
 - b. Back through L, V, U, straight or similar shaped course. May be elevated no more than 24".
2. Jump - An obstacle whose center height is not less than 14" high or more than 24" high. Holding the saddle horn is permissible for this obstacle.
3. Side pass obstacle – Any object which is safe and of any length may be used to demonstrate responsiveness of the horse to leg signals. Raised side pass obstacles should not exceed 12 ".
4. Carry object from one part of the arena to another.
5. Trot through cones – spacing to be minimum of 6'.
6. Swing rope – throw rope at dummy steer head
7. Put on slicker or coat
8. Walk over water obstacle
9. Walk through brush
10. Step in and out of obstacle
11. Stand to mount with mounting block
12. Remove and replace materials from mailbox
13. Ground Tie
14. Pick-up feet
15. Lead at the trot
16. Open gate on foot
17. Cross Natural ditches or up embankments

Scoring Stock Horse Trail

Each obstacle shall have a numerical score of 10, and the possible score for each obstacle shall be the same. Scoring is made on the ability of the horse to negotiate obstacles clean, correct, briskly and without undue hesitation. Horses must be given credit for any portion of an obstacle that is done in a correct and timely manner. The rider has the option of eliminating any obstacle and taking a score of "0" for the missed obstacle. A judge may ask a horse to pass on an obstacle after three refusals or for safety concerns.

Trail Credits:

- + Credit is give to horses negotiating the obstacles with style and some degree of speed, providing correctness is not sacrificed.
- + Horse should receive credit for showing attentiveness to obstacles and capability of picking their own way through the course when the obstacles warrant it, and willingly responding to the rider's cues on more difficult obstacles.
- + Quality of movement and cadence should be considered part of the maneuver score for the obstacle.

Trail Deductions:

- Artificial appearance and/or unnecessary delay while approaching or going through obstacles.
- Each tick of an obstacle
- Break of gait at walk or jog
- Placing both front or hind feet in a single-strided slot or space
- Skipping over or failing to step into a required space
- Split pole in lope-over
- Stepping on a log, pole, cone or obstacle
- Wrong lead or breaking gait at lope
- Stepping outside the confines of; falling off or out of an obstacle such as a back thru, bridge, side pass, box, or water box
- Refusals, balk, or attempting to evade an obstacle by shying or backing
- Blatant disobedience (kicking out, bucking, rearing, striking)
- Failure to ever demonstrate correct lead or gait, if designated
- Failure to complete obstacle

SHOT Stock Horse Reining Class

This class measures the ability of the western stockhorse to perform many basic handling maneuvers. The horse should guide willingly without undue resistance. The Stock Horse of Texas Association has three recognized regular patterns plus a Novice & Youth Pattern..

Pattern 1 requires a stop before beginning the spins. Pattern 2 and 3 require a break to a walk or stop before executing the lope.

Scoring Stock Horse Reining

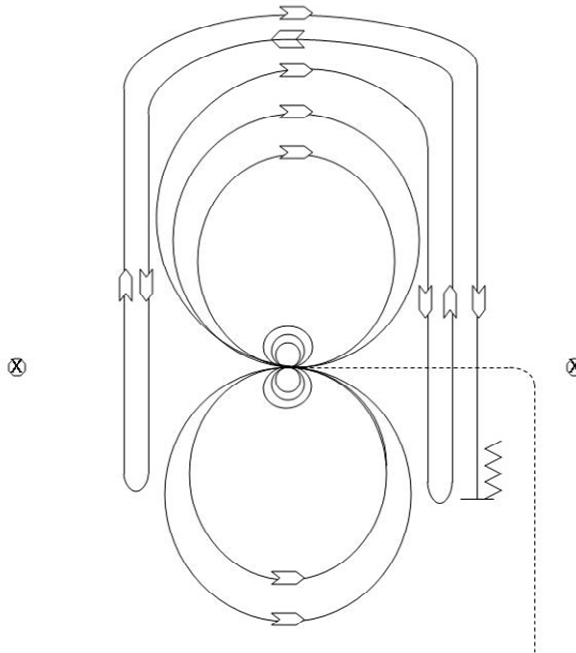
The patterns are broken down into either 7 or 8 maneuvers to be scored 10 points each. **Reduction in scores of 2 points per maneuver will be assessed for using 2 hands with a curb bit. Over or under spinning will reduce the score 2 points per maneuver.** Maneuvers performed incorrectly or without any degree of difficulty will be scored accordingly.

SHOT Stock Horse Reining

Pattern #1

Mandatory Markers:

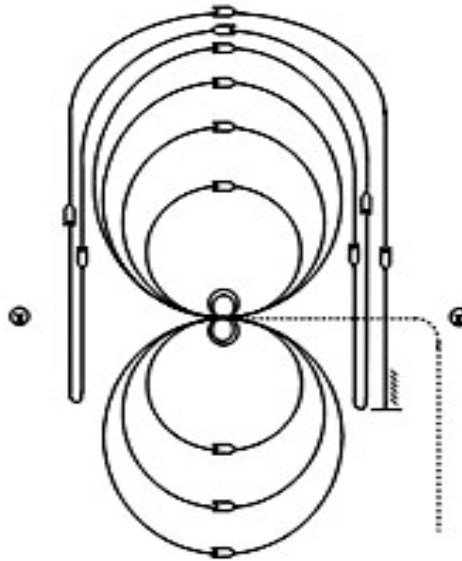
The judge shall indicate with markers on arena fence the center of the pattern.



Ride pattern as follows:

1. Trot to center of arena and stop.
2. Complete three spins in each direction
3. Begin on right lead and lope two large circles to the right, change leads.
4. Lope two large circles to the left, change leads.
5. Begin a large circle to the right but do not close this circle. Run down the right side of the arena past the center marker and do a left roll back at least 20 feet from the wall or fence, no hesitation.
6. Continue back around the previous circle but do not close this circle. Run down the left side of the arena past the center marker and do a right roll back at least 20 feet from the wall or fence, no hesitation.
7. Continue back around previous circle but do not close this circle. Run down the right side of the arena past the center marker and do a sliding stop at least 20 feet from the wall or fence. Back up at least 10 feet. Hesitate to show completion of pattern.

SHOT Stock Horse Reining **Pattern 2**



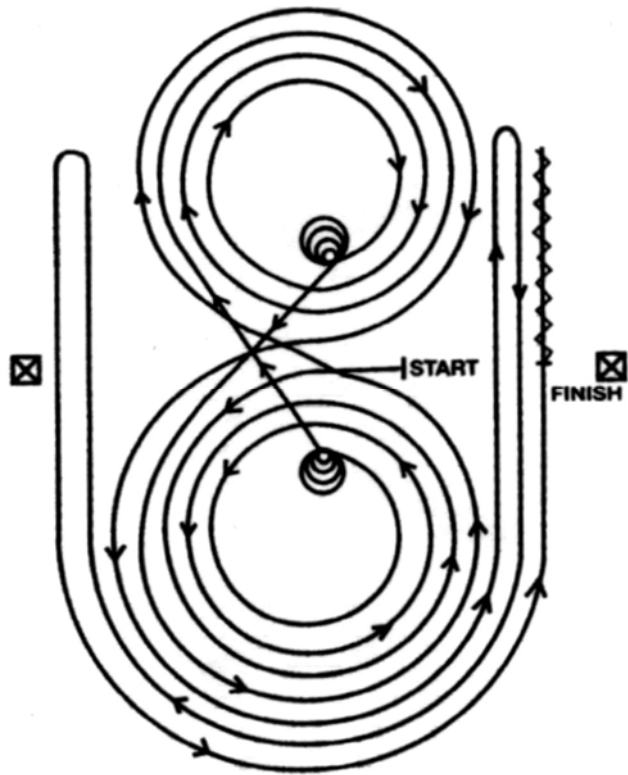
Mandatory Marker along Fence or Wall

The judge shall indicate with markers on arena fence or wall the center of pattern.

Ride pattern as follows:

1. Start by trotting into center of arena and either stop or walk before departure.
2. Make a large fast circle to right on the right lead.
3. Draw the second circle down to a small circle until you reach the center marker; stop.
4. Do four spins to the inside of the small circle at the center marker; at end of spins horse should be facing the left wall, slight hesitation.
5. Begin on left lead and make a large fast circle
6. Then a small circle, again drawing it down to the center of the arena, stop, no hesitation on stops.
7. Do four spins to the inside of the circle, slight hesitation, horse to be facing left wall.
8. Take a right lead & make a fast figure eight over the large circles, close the eight, & change leads.
9. Begin a large fast circle to the right but do not close this circle. Run down the right side of the arena past the marker and do a left roll back at least 20 feet from the wall or fence, no hesitation.
10. Continue back around the previous circle but do not close this circle. Run down the left side of the arena past the center and do a right roll back at least 20 feet from the wall or fence, no hesitation.
11. Continue back around previous circle, but do not close this circle. Run down the right side of the arena past the center marker and do a sliding stop at least 20 feet from the wall or fence. Back up at least 10 feet. Hesitate to show completion of pattern.

SHOT Stock Horse Reining Pattern # 3



Mandatory Marker along Fence or Wall.

The judge shall indicate with markers on arena fence or wall the center of pattern.

Ride Pattern as follows:

1. Enter arena at sitting trot. Walk or stop before lope.
Begin at the center of the arena facing the left wall or fence
2. Begin on the left lead and complete three circles to the left. (The first two circles should be large and fast; the third circle small and slow.) Stop at the center of the arena. Hesitate.
3. Complete four spins to the left. Hesitate.
4. Begin on the right lead and complete three circles to the right. (The first two circles should be large and fast; the third circle small and slow. Stop at the center of the arena. Hesitate.
5. Complete four spins to the right. Hesitate.
6. Begin on the left lead and ran a large fast circle to the left, change leads at the center of the arena, run a large fast circle to the right and change leads at the center of the arena.
7. Continue around previous circle to the left but do not close this circle. Run up the right side of the arena past the center marker and do a right rollback at least twenty feet from the wall or fence – no hesitation.
8. Continue around previous circle but do not close this circle. Run up the left side of the arena past the center marker and do a left rollback at least twenty feet from the wall or fence – no hesitation.
9. Continue back around previous circle but do not close this circle. Run up the right side of the arena past the center marker and do a sliding stop at least twenty feet from the wall or fence. Back up at lest ten feet. Hesitate to demonstrate completion of the pattern.

SHOT Working Cowhorse Class – 3 Minutes

A model western stock horse must also be a cowhorse and this class has been designed to demonstrate and measure the horse's ability to do cow work. Holding the saddle horn is permitted in this class. There will be a 3 minute time limit per horse to perform the entire work. When there is one minute left on the time, the announcer will announce, "one minute". At 3 minutes, the announcer will call time. If a contestant completes the work before the 3 minute time is completed, the judge may blow a whistle to indicate that all requirements of the class have been met. The judge may also blow a whistle at anytime for the contestant to cease work for safety reasons. Judges will give credit for what they have seen.

The work in the cowhorse class will consist of the following three parts.

Part One – Boxing the Cow – The rider shall ride into the arena and face the cattle entry gate. The rider shall signal for their cow to be turned into the arena. Upon entry into the arena, the cow shall be controlled on the entry end of the arena for a sufficient amount of time to demonstrate the horse's ability to "hold" the cow. If the cow does not immediately challenge the horse, the rider shall aggressively move in on the cow to demonstrate his horse's ability to drive and block the cow on the entry fence.

Part Two – Fence Work – After the cow has been controlled on the end of the arena, the rider shall deliberately release the cow and drive it down the side of the arena. The cow should be turned on the fence at least once in each direction. The first run out for a turn shall be past the half-way mark of the arena. All turns down the side shall be completed before reaching the end fence.

Part Three – Optional Roping or Circling - For the third part of this class, the rider has the option to either rope and stop the cow or to take the cow to the middle of the arena and circle it at least once each direction. A rider may circle or rope the cow, but cannot combine the two to get credit for this portion of the class.

To rope the cow, the rider must be carrying a rope when the class starts. The rider may pull up after the fence work, take down the rope, and proceed to rope and stop the cow. The rider may only throw two loops. A no catch does not mean a score of zero for this portion of the class. A horse must be given credit for rating and tracking, but should not be scored higher than a horse that has also demonstrated the ability to stop and hold the cow.

Scoring Working Cowhorse Class

Scoring for the working cowhorse class shall be 20 points for each of the three parts of the class with a total of 60 points for the entire class.

Scoring for Part One – Boxing (Maximum of twenty points)

Credit: + Expression by the horse and making moves with little rider assistance
+ Holding and controlling the cow
+ Amount of work actually done and the degree of difficulty of the work
+ Horse forces cow to turn

Deductions: - Missing cow badly on turns
- Horse having to be handled excessively
- Letting cow escape to start rundown instead by being held, released, and driven down the fence
- Using side fences to turn cow

Scoring for Part Two – Fence Work (Maximum of twenty points)

Credit: + First run at least ½ length of arena
+ Turns that are right on the cow
+ Controlling a difficult cow

Deductions: -Making first run less than ½ length of arena
-Using end fences to help turn cow
-Going around the end of arena to get a turn
- Sliding by cow by more than a horse length on turns

Scoring for Part Three – Optional Circling or Roping (Maximum of twenty points)

Circling

Credit: +Getting up on cow close enough to control the circles
+Acknowledging the cow during circling and working willingly

Deductions: -Lack of control in circles due to distance from cow
-Not acknowledging the cow or simply lack of horse's ability

Roping

Credit: +Rating and following cow to allow roper the optimum position to rope
+Stopping hard and staying in the ground during the jerk

Deductions: -Not tracking, not rating and not catching up to the cow
-Poor stop
-Being pulled around by the cow

SHOT Modified Working Cow Horse Class for the Limited NON-PRO Division Only – 2 min.

This class has been developed for non-pro riders as an intermediate level working cow horse class. Holding the saddle horn is permitted in this class. There will be a **two minute time limit** per horse to perform the entire work. When there is one minute left on the time, the announcer will announce, "one minute". At two minutes, the announcer will call time. If a contestant completes the work before the two minute time is completed, the judge may blow a whistle to indicate that all requirements of the class have been met. The judge may also blow a whistle at anytime for the contestant to cease work for safety reasons. Judges will give credit for what they have seen.

Markers To be Set Up For This Class: Two cones will be placed approximately 20 ft. off of the side fences and at approximately half the length of the arena. The work in this will consist of the following three parts.

Part One – Boxing the Cow – The rider shall ride into the arena and face the cattle entry gate. The rider shall signal for their cow to be turned into the arena. Upon entry into the arena, the cow shall be controlled on the entry end of the arena for a sufficient amount of time to demonstrate their horse's ability to "hold" the cow.

Part Two – Release Cow and Drive Down Middle of Arena to Opposite End of Arena – After the cow has been controlled on the entrance end of the arena, the rider shall deliberately release the cow and drive it down the middle of the arena to the opposite end. Driving will be down the center of the arena to demonstrate the horse's ability to rate and control the cow.

Part Three – Boxing the Cow at Opposite end of arena – The exhibitor will again control or "hold" the cow at this end of the arena for a sufficient amount of time to demonstrate the horse's ability to "hold" the cow. Contestant should stop and raise their hand if they desire to quit before the two minutes are up.

Scoring SHOT Modified Working Cow Horse class for Limited Non Pro Division

Scoring for the modified working cow horse class for limited non pro class will be from 1 to 60 points based on 20 points for each "boxing the cow" work and 20 points for the drive down the center of the arena.

Scoring for Part One and Three – Boxing (Maximum of twenty points at each end of arena.)

Credit: +Expression by the horse and making moves with little rider assistance
+Holding and controlling the cow
+Amount of work actually done and the degree of difficulty of the work

Deductions: -Missing cow badly on turns
-Horse having to be handled excessively
-Letting cow escape to start rundown instead of being held, released, and driven down the center of arena

Scoring for Part Two – Driving down arena (Maximum of 20 points)

Cones will be placed approximately 20 ft off of the side fences and halfway down the arena. To receive full credit for the drive down the cow must be driven between the cones. Cattle driven between the markers and the fence will receive a score of 10 points or less. Cattle driven between the cones can receive an extra 10 points or a maximum of 20 points

Credit: +Rating the cow
+ Blocking the cow with pressure towards the end of the arena.
+ Driving the cow down the middle of the arena

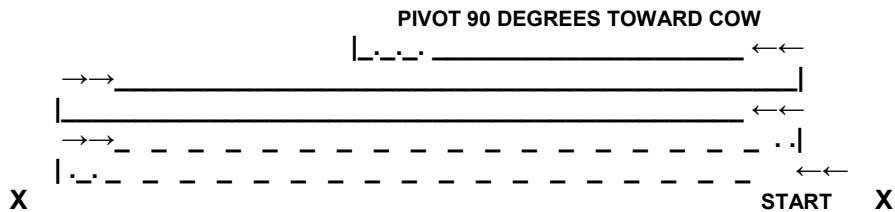
Deductions: -Unable to direct cow to opposite end of arena
-Failure to rate the cow
-Letting cow return to entry gate
-Using side fence to help drive the cow

SHOT Working Cow Horse Class for Novice & Youth Divisions

A versatile western stock horse must also be a cow horse and this class has been designed to demonstrate and measure the horse's ability to do cow work. Holding the saddle horn is permitted in this class. **This class has been developed for novice and youth riders as an entry level working cow horse class.** The rider will enter the arena and perform the cow horse pattern. After calling for the cow, the rider will have 1 minute to work the cow. At 1 minute, the announcer will call time. The judge may blow a whistle at anytime for the contestant to cease work for safety reasons. Judge will give credit for what they have seen. The work in the cow horse class will consist of the following two parts.

Part One – Cow Horse Pattern – The rider shall trot into the arena, trot to first cone and start pattern.

Markers: Marker placement shall be a minimum of 20 ft from the wall



Enter arena at trot and trot to first cone

1. Extended Trot to second cone; Stop; Back two steps; Rollback to right
2. Extended Trot back to first cone; Stop; Back two steps; Rollback to left
3. Lope to second cone; Stop; Rollback to right
4. Lope to first cone; Stop; Rollback to left
5. Lope past center; Stop, Back; Pivot 90 degrees toward cattle and call for cow to be worked.

Part Two – Boxing the Cow – The rider shall signal for their cow to be turned into the arena. Upon entry into the arena, the cow shall be controlled on the entry end of the arena for one minute to demonstrate the horse's ability to "hold" the cow. If the cow does not immediately challenge the horse, the rider shall aggressively move in on the cow to demonstrate his horse's ability to drive and block the cow on the entry fence.

Scoring Novice & Youth Working Cow Horse Class

Scoring for the working cow horse class shall be 20 points for the Dry Work and 40 points for the Cow Work for a total of 60 points for the entire class.

Scoring for Part One – Cow Horse Pattern (Maximum of twenty points)

- Credit: + Good Hard Straight Stops
+ Correct Rollbacks
+ Correct Gaits
- Deductions: - Failure to complete pattern as described
- Poor stops
- Poor turns
- Poor backing

Scoring for Part Two – Boxing (Maximum of forty points)

- Credit: + Expression by the horse and making moves with little rider assistance
+ Holding and controlling the cow
+ Amount of work actually done and the degree of difficulty of the work
- Deductions: - Missing cow badly on turns
- Horse having to be handled excessively
- Letting cow escape

Stock Horse of Texas Association, INC
3708 E 29th Street, PMB# 101
Bryan, Texas 77802
Phone/Fax: 979.846.4538
www.stockhorsetexas.org

2008 Officers

President	Kim Lindsey, Jayton, Texas
Vice-President	Doug Householder, College Station, Texas
Secretary	Glenn Hodges, Gustine, Texas
Treasurer	Janet Yeates, Bryan, Texas
Past President	Vicki Hoggett, Bluff Dale, Texas
Executive Director	B. F. Yeates, Bryan, Texas

2008 Board of Directors

Term 2006-2008	Jim Campbell, Van Alstyne, Texas Kris Wilson, Lubbock, Texas
Term 2007-2009	Jimbo Humphreys, Spur, Texas Joan Martin, Decatur, Texas
Term 2008-2010	Greg Ordeneaux, Richmond, Texas Rick Thompson, Bryan, Texas Debbie Wold, Kaufman, Texas Ken Johnson, Fort Worth, Texas
Directors-at-Large	Roger Blackmon, Cross Plains, Texas Jack Brainard, Gainesville, Texas Dennis Sigler, College Station, Texas
Extension Liaison Advisors	Pete Gibbs, Horse Specialist, College Station, TX Brett Scott, Horse Specialist, College Station, TX